

Betty's L.A. Zoo Tour



FIRST STOP: ENTRY PLAZA

1

START: ENTRY PLAZA

Welcome!

**Walk in Betty White's footsteps
and read her words as you explore
the Zoo and visit some of her
favorite animals.**

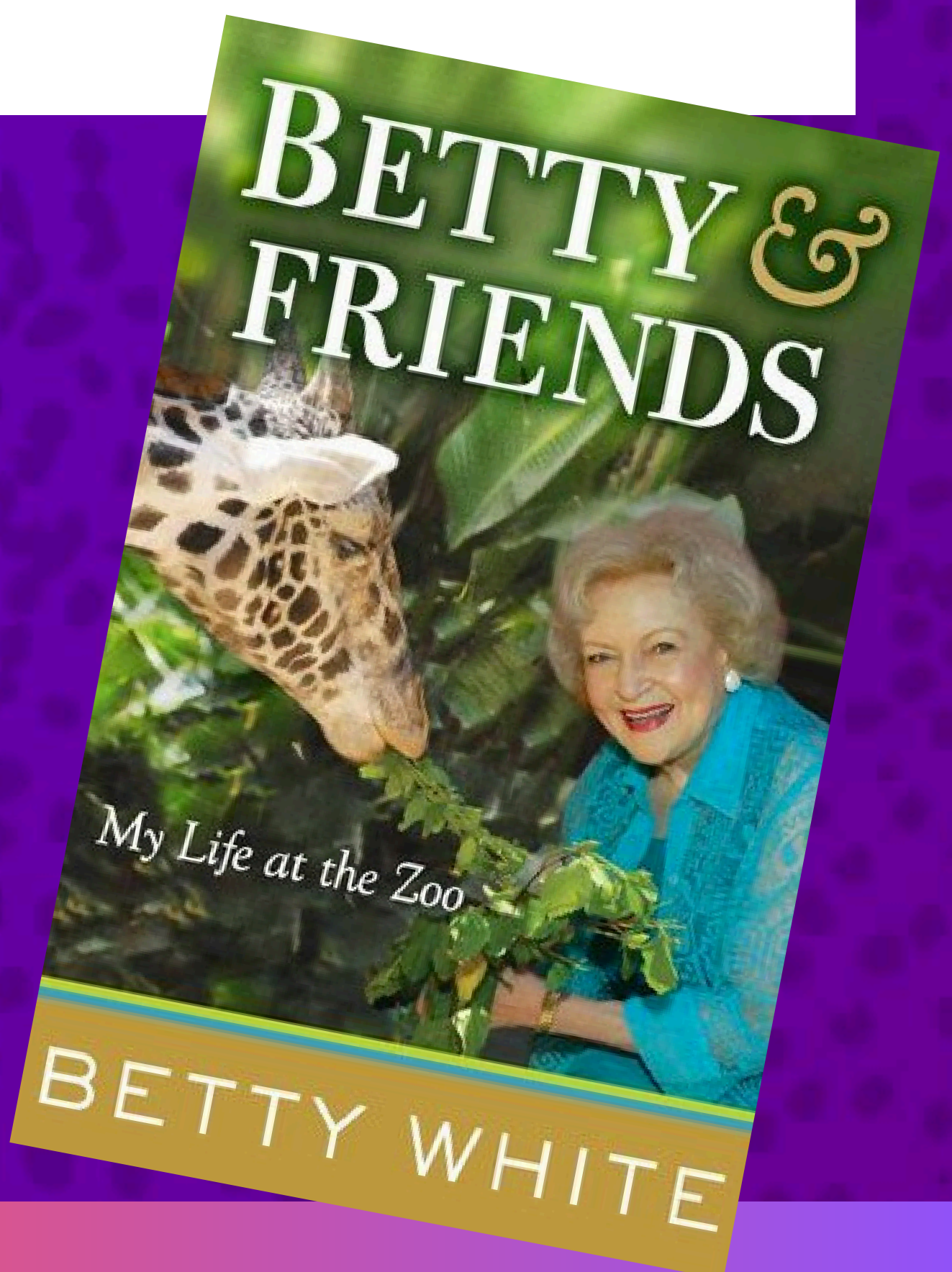


NEXT: "SOMETHING TO REMEMBER"

Betty Says...

“I will never come away from a zoo visit without having seen something or learned something to remember.”

From her book *Betty & Friends: My Life at the Zoo*



NEXT: SEA LIFE CLIFFS

2

SEA LIFE CLIFFS

Climb the stairs in Entry Plaza and find a good spot to view frolicking, sunning, or snoozing marine mammals.

Below: Betty White with a sea lion at the L.A. Zoo in 1995.



NEXT: THE “ANIMAL NUT”

Betty Says...

“Zoos, oddly enough, are not just for kids. They’re for people like me who need an animal fix. There are a lot more of us animal nuts than people realize.”

Below: Betty and Lance Bass at the 2015 Beastly Ball gala.



NEXT: SLOTH

3

SLOTH

Pass through the International Marketplace and go right at the ATM. Veer right again before you get to Zoo Grill. Head to the sloth habitat to view Charlie the Linné's two-toed sloth, who was well known to Betty.



NEXT: "THE LUCKIEST PERSON"

Betty Says...

“I’m the luckiest person in the world. My life is divided in absolute half: half animals, half show business. They’re the two things I love the most.”

Previous slide: Betty with Charlie the sloth at the Zoo. Below: Betty and Jimmy Stewart at the Zoo in 1974.



NEXT: THE LAIR

4

THE LAIR

Go back to the main path. Continue past the flamingo habitat and shuttle stop to the fork in the road. Take a left and another left to enter the LAIR, which is home to many rare and beautiful snakes such as the python shown here.



NEXT: “SEE AND LEARN”

Betty Says...

“Without zoos to provide opportunities for young people to see and learn about animals so that they will grow up to become the conservationists of tomorrow—the world will be a pretty sad place.”

Previous: Betty and Slash with a python. Below: With friends at the Zoo in 1998.



NEXT: LAIR ADS

“Wildest Spot in L.A.”

TV ADS FOR THE LAIR

Along with fellow GLAZA trustee Slash, Betty starred in hilarious TV ads promoting the March 2012 opening of the LAIR (Living Amphibians, Invertebrates, and Reptiles), which promised to be the “wildest spot in L.A.”

To view the ads, go to bit.ly/LAZoo-LAIR-TV-Ads or scan the QR code on the last slide.



NEXT: AUSTRALIA

5

AUSTRALIA

Exit the LAIR, turn left and left again, into the Australia section. At the second habitat on the left, try to spy the koala perched in a tree.



NEXT: A SPECIAL PLACE

A Special Place

To the right of the koala habitat is Allen Ludden Plaza, named after Betty's beloved husband. Betty was memorialized there after her 2022 passing.

Previous: Betty at the koala habitat adjacent to Allen Ludden Plaza. Below: Guests were invited to visit the plaza and leave notes of appreciation.



NEXT: GORILLA

6

GORILLA

Complete the Australia loop, exit the area, turn left, then enter Campo Gorilla Reserve.

Below: Betty with select Zoo, GLAZA, and City of Los Angeles leadership at the 2007 opening of Campo Gorilla Reserve.



NEXT: "THE BEST KEEPER STAFF"

Betty Says...

“We have state-of-the-art ape and elephant exhibits, we have the best keeper staff, we have beautiful grounds. It’s a lovely place, and I encourage everyone to stop in and see us.”

Below: Betty with L.A. Zoo animal keepers when she was named an honorary keeper.



NEXT: PRONGHORN PLAZA

7

PRONGHORN PLAZA

After viewing the gorilla family group and bachelor group, exit and go straight, past the zebras, to the peninsular pronghorn (aka, berrendo) habitat.

Below: Betty feeding young pronghorn.



NEXT: “ARKS OF THE WORLD”

Betty Says...

“With no more than 200 left in existence, zoos may be the last refuge for the peninsular pronghorn. We’ve had tremendous success breeding these animals since receiving our first pair in 2006. Zoos are the arks of the world. And we can’t let the species go. We have to keep fighting.”



NEXT: ORANGUTAN

8

ORANGUTAN

Backtrack past the zebras and go left. Continue until you see a bridge on your right. Cross the bridge and turn right into Red Ape Rain Forest.

Below: At the Zoo's orangutan habitat.



NEXT: "GOOSEBUMPS"

Betty Says...

Of the orangutan habitat:
“It was inspiring to watch them explore. I can still get goosebumps thinking about it!”

Below: Orangutan Elka, named after Betty’s *Hot in Cleveland* character, as a baby.



NEXT: ELEPHANTS OF ASIA

9

ELEPHANTS OF ASIA

Exit Red Ape Rain Forest, turn left,
and head to Elephants of Asia's
Thai Pavilion on the right.



NEXT: "GORGEOUS"

Betty Says...

Of the elephant habitat:
“Well, my lord, I think it is gorgeous. It’s beautiful on both sides of the enclosure. I think it’s great for the elephants, and I think it’s great for the people.”

Previous: Betty at the Elephants of Asia habitat, of which she was a passionate supporter.
Right: With now-retired elephant Animal Keeper Vicky.



NEXT: GIRAFFE

10

GIRAFFE

Leave the pavilion and follow the uphill path through the bamboo forest until you come to the giraffes in Animals of Africa.

Below: At the Zoo's Masai giraffe habitat. Next slide: Feeding an L.A. Zoo giraffe.



NEXT: LIPSTICK ON A GIRAFFE?

Betty Says...

“An apology is necessary after my visit to the Cleveland Zoo. I’m sorry I got lipstick on your giraffe.”

From her book *Betty & Friends: My Life at the Zoo*, where she shared that she would visit local zoos wherever she traveled.



NEXT: CHIMPANZEE

11

CHIMPANZEE

Head to Chimpazees of the Mahale Mountains, which is directly across from giraffes.

Below: Betty and *Hot in Cleveland* costars Jane Leeves and Wendie Malick in front of the chimpanzee habitat. Next slide: With Jane Goodall at the exhibit's 1998 opening.



NEXT: "WHO KNOWS BETTER?"

Betty Says...

On her advocacy for the development of the new chimpanzee habitat: **“We even got input from Jane Goodall, because who knows chimpanzees better than Jane? And it turned out really beautiful.”**



NEXT: OKAPI

12

OKAPI

Exit the chimpanzee area and go back toward the giraffes. Continue up the hill and pass Mahale Café. Look to your left to spy an animal that appears to be a cross between a giraffe and zebra. It's the okapi.

Below: Betty feeding an okapi behind the scenes.



NEXT: "FASCINATING!"

Betty Says...

“There isn’t an animal I don’t find fascinating—except possibly the two-legged ones, but even they can be interesting.”

Below: Betty holding a hedgehog.



NEXT: WORLD OF BIRDS SHOW

13

WORLD OF BIRDS SHOW

Backtrack down to the chimpanzee habitat and walk the length of it. On the other side, take the path to the left. Continue to Tiger Plaza, and turn right after the François' langur habitat. Follow the path to Animals of South America. Turn left and head to the World of Birds Show Theater.



NEXT: THE DRAMA

Betty Says...

“As much as I love TV—and you can imagine that’s quite a lot—television cannot match the drama of seeing animals in person. A zoo visit has the power to ignite curiosity and excitement that leads to a lifelong passion for wildlife. I should know!”

Previous: With a crowned crane at the World of Birds Theater.
Right: With a feathered friend.



NEXT: RAINFOREST OF THE AMERICAS

14

RAINFOREST OF THE AMERICAS

Pass the World of Birds Theater and enter Rainforest of the Americas for views of jaguars, tapirs, howler monkeys, giant otters, and more. Once you pass the otters and piranhas, you'll be at the spot where Betty posed for the photo below.



NEXT: MAGNIFICENT BOND

Betty Says...

“We have the best keeper staff. They are absolutely wonderful, and what I encourage the people coming to the Zoo to do is engage some of those keepers. Listen to them and, above all, watch their relationship with the animals they care for. The bond between the keepers and their animals is truly magnificent.”

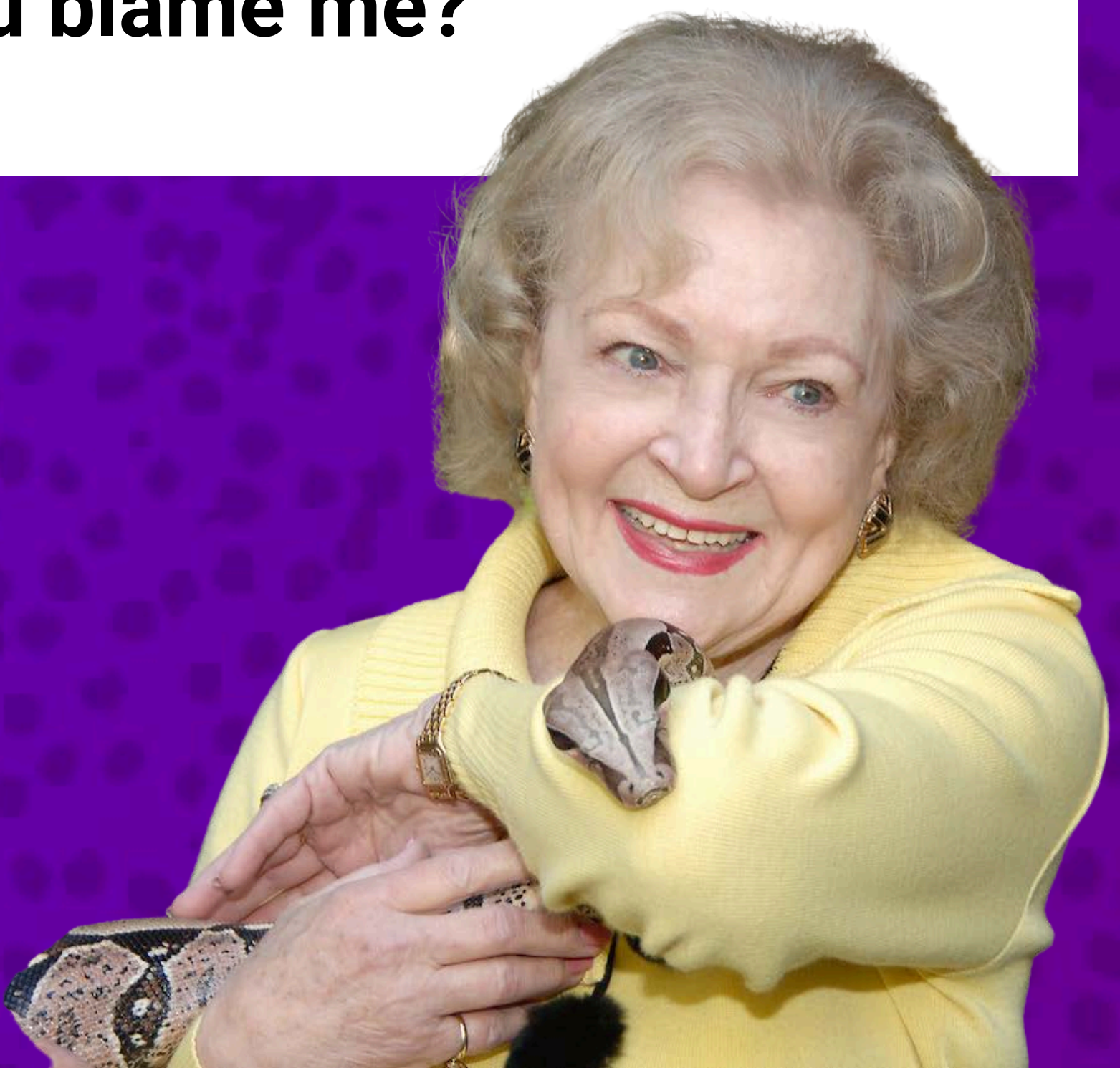
Previous: With Animal Keeper—
now Principal Keeper—Dani
and an owl.

NEXT: THANK YOU!

Thank You!

You've completed Betty's Zoo Tour! Thanks for joining us on this journey, and for your generous donation. You're supporting the place that Betty called her "second home" and the mission she cared so deeply about.

"It's been widely reported that I prefer the company of animals to humans.... It is true. Can you blame me?"



CREDITS & EXTRAS

Photos By

Charlene Howard

Tad Motoyama

Jamie Pham

Jalien Tulley

View LAIR TV Ads

Scan code to view on YouTube.



Learn More

Go to lazoo.org/betty-white

©2025 Los Angeles Zoo and
Greater Los Angeles Zoo Association